

79-221 1/2

79-221 1/2

79097751

1979 MAY 24 10:11 AM

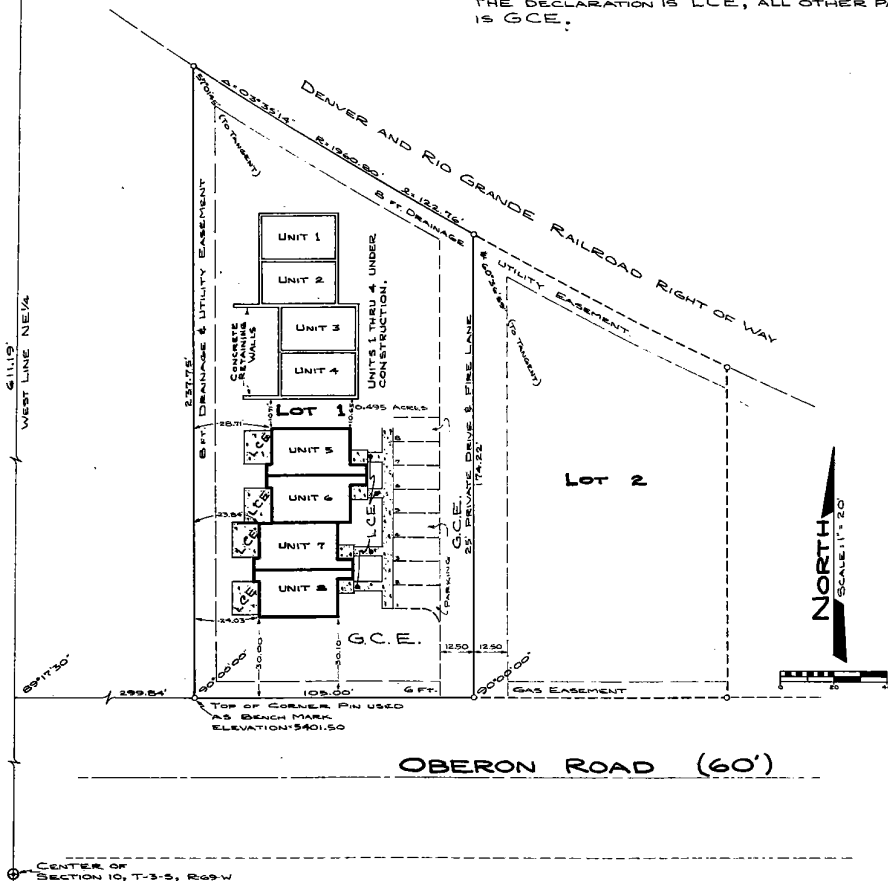
BOOK PAGE SHEET ONE OF TWO SHEETS

CONDOMINIUM MAP FOR OBERON ROAD CONDOMINIUMS

LOT 1, BLOCK 1, MEYER SUBDIVISION, CITY OF ARVADA, COUNTY OF JEFFERSON, STATE OF COLORADO.

N 1/4 CORNER SECTION 10, T-3-S, R-69-W

NOTES: LCE MEANS LIMITED COMMON ELEMENT.
GCE MEANS GENERAL COMMON ELEMENT.
ALL PARKING ASSIGNED BY DECLARANT IN THE DECLARATION IS LCE, ALL OTHER PARKING IS GCE.



OWNER'S CERTIFICATE:

Brown-Paschall, Inc., a Colorado Corporation, being the owner of the herein described real property hereby certifies that this condominium map of the Oberon Road Condominiums has been prepared pursuant to the purposes stated in the Condominium Declaration for Oberon Road Condominiums recorded at Reception No. 79097751 of the Records of the Clerk and Recorder of County of Jefferson, State of Colorado.

For: Brown-Paschall, Inc.

By J. V. Paschall, President

By Billie D. Paschall, Sec.-Treasurer

ACKNOWLEDGMENTS:

State of Colorado }
County of Jefferson }

The foregoing owner's certificate was acknowledged before me this 17th day of October, 1979, by J.V. Paschall as President and Billie D. Paschall as Secretary-Treasurer of Brown-Paschall, Inc., a Colorado Corporation, witness my hand and official seal this 17th day of October, 1979.

My commission expires April 17, 1983

By Notary Public

SURVEYOR'S CERTIFICATE:

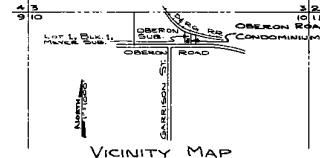
I, Tibor C. Gartner, being a Registered Land Surveyor in the State of Colorado, do hereby certify that this plat of Oberon Road Condominiums, showing the survey with building and improvements, unit designations, dimensions and elevations, accurately depicts the layout measurements and locations of all the improvements on Lot 1, Block 1, Meyer Subdivision, City of Arvada, County of Jefferson, State of Colorado.

Tibor C. Gartner, Reg. L.S. 4678

CLERK AND RECORDER'S CERTIFICATE:

I hereby certify that this Plat was filed for record in my office this 25th day of October, A.D. 1979, at 11:18 o'clock P.M., and was recorded in Condominium Plat Book _____ on Page _____.

County Clerk and Recorder



79-221 2/2

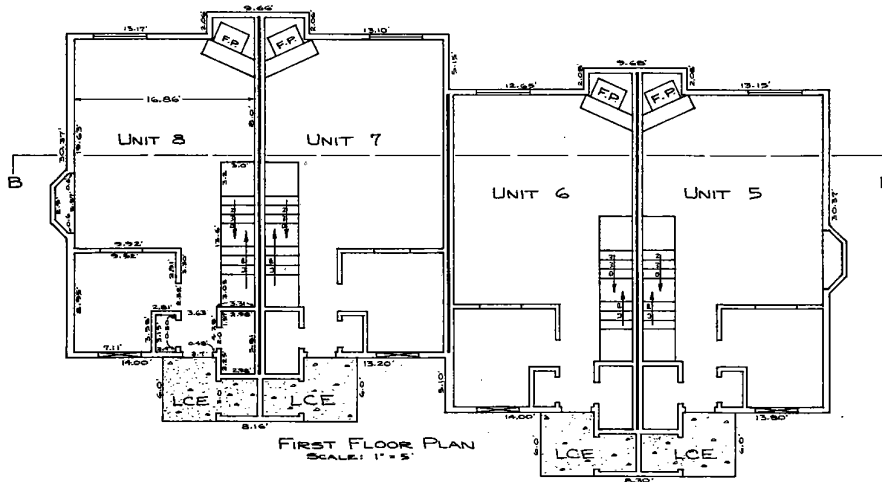
79-221 2/2

79097751

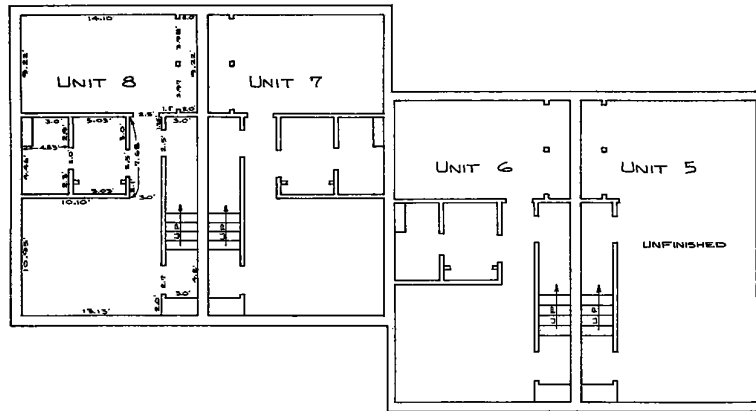
CONDOMINIUM MAP FOR OBERON ROAD CONDOMINIUMS

LOT 1, BLOCK 1, MEYER SUBDIVISION, CITY OF ARVADA,
COUNTY OF JEFFERSON, STATE OF COLORADO.

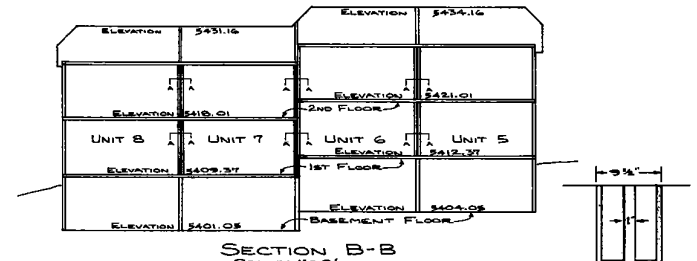
BOOK PAGE
SHEET TWO OF TWO SHEETS



FIRST FLOOR PLAN
SCALE: 1" = 5'



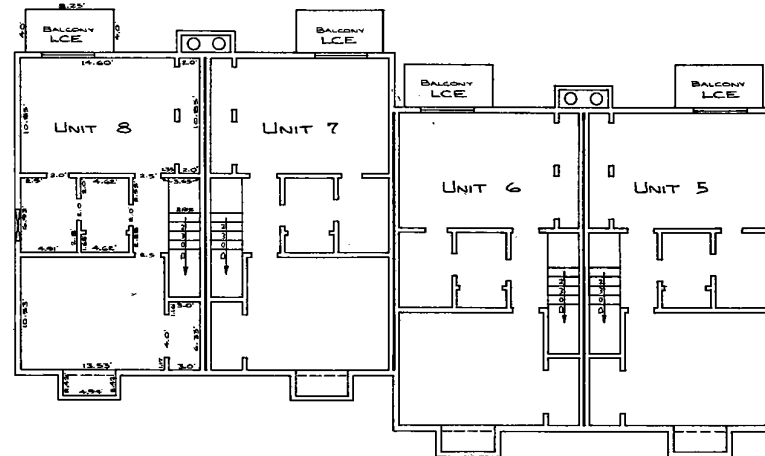
BASEMENT FLOOR PLAN
SCALE: 1" = 5'



SECTION B-B
SCALE: 1" = 5'

EACH UNIT CONSISTS OF A BASEMENT, FIRST AND SECOND FLOOR.
ALL UNITS HAVE THE SAME BASIC DIMENSIONS.
UNITS 6 AND 8 ARE THE SAME LAYOUT PLAN,
UNITS 5 AND 7 ARE THE SAME LAYOUT PLAN
AS UNITS 6 AND 8 EXCEPT THEY ARE FLIPPED.

SECTION A-A



SECOND FLOOR PLAN
SCALE: 1" = 5'